



# THE ARABELLA



## THE ARABELLA

4 Bedrooms 2.5 Baths (Study/Flex)  
3 Car Front Entry Garage

**2,473 Total Living**

**3,731 Total Under Roof**

## Vanacore Homes

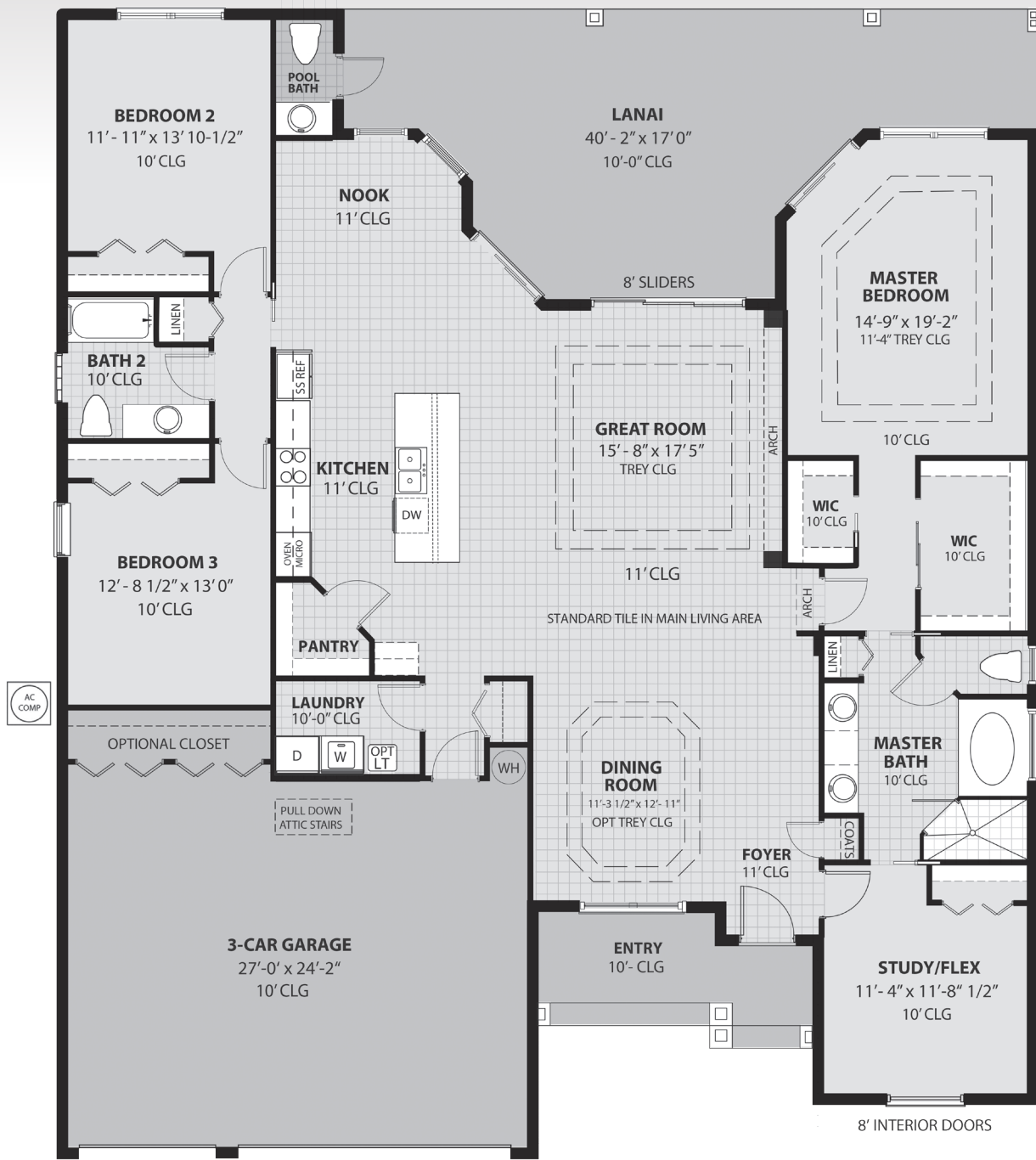
*Your Hometown Builder Since 1991*

NEW HOME SALES & INFORMATION CENTER  
3500 Merritt Drive, Ormond Beach, FL 32174

All rights reserved. All elevations and floor plans are the exclusive property of Vanacore Homes, Inc. and may not be copied or duplicated without written permission. Vanacore Homes reserves the right to modify plans, alter specifications and change dimensions without consent of or notice to the buyer. All dimensions are approximate. Artist renderings and floor plans are concepts only and may vary from actual construction. Some concepts may include design elements that are considered options. See your Vanacore Representative for details.

010321

[www.VanacoreHomes.com](http://www.VanacoreHomes.com) [www.HalifaxPlantation.com](http://www.HalifaxPlantation.com) 386-256-4363



### THE ARABELLA / SQ. FT.

1st Floor Living	2,473
Lanai	472
Entry	103
Garage	683

<b>Total Living</b>	<b>2,473</b>
<b>Total Under Roof</b>	<b>3,731</b>

## Vanacore Homes

Your Hometown Builder Since 1991

www.VanacoreHomes.com 386-256-4363

010321

All rights reserved, all elevations and floor plans are the exclusive property of Vanacore Homes, Inc. and may not be copied or duplicated without written permission. Vanacore Homes reserves the right to modify plans, alter specifications and change dimensions without consent of or notice to the buyer. All dimensions are approximate. Artist renderings and floor plans are visual depictions and may vary from actual construction. **CBC058991**